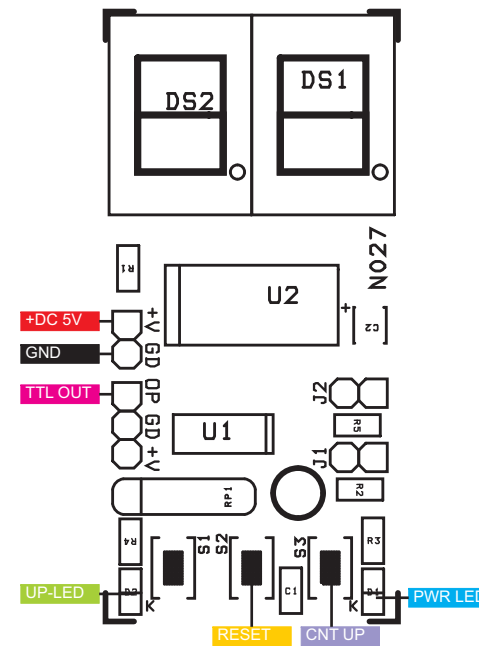
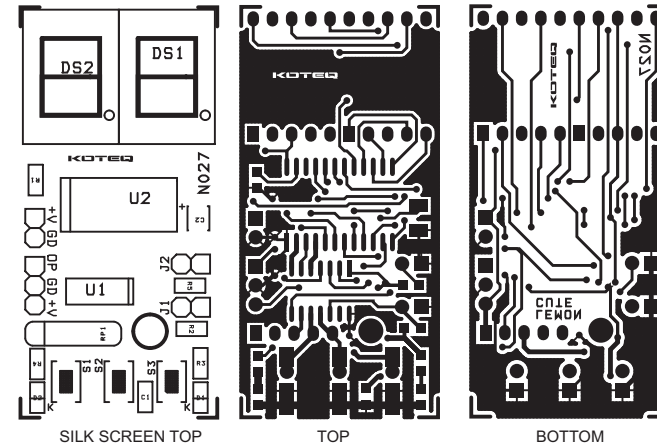


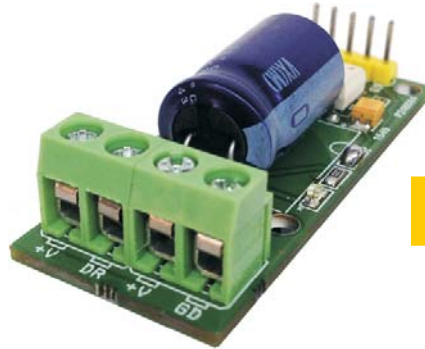
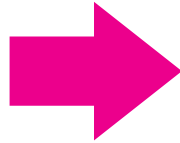
LED Based Strobe For Entertainment, Events & Warning Signals

BOM			
SR.	QNTY.	REF	DESC.
1	1	CN1	2 PIN HEADER CONNECTOR
2	1	CN3	3 PIN HEADER CONNECTOR
3	1	C1	0.1uF SMD 0805
4	1	C2	10uF/16V SMD TANTLUM 1210
5	2	DS1,DS2	COMON ANODE RED 7 SEGMENT 0.5" DISPLAY
6	2	D1,D2	LED SMD 0805
7	2	J1,J2	OMIT
8	1	RP1 4K7	5 PIN 4K7 RESISTOR PACK
9	1	R1	3K SMD 0805
10	4	R2,R3,R4,R5	470E SMD 0805
11	1	S1	TACT SWITCH
12	1	S2	TACT SWITCH
13	1	S3	TACT SWITCH
14	1	U1	PIC16F1825 SMD SO14
15	1	U2	CAT4016 SMD SO24

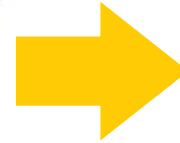




FLASH PULSE GENERATOR



SOLID STATE RELAY



LED LIGHT



0 7 0 0 5