

## 200W LAMP FLASHER



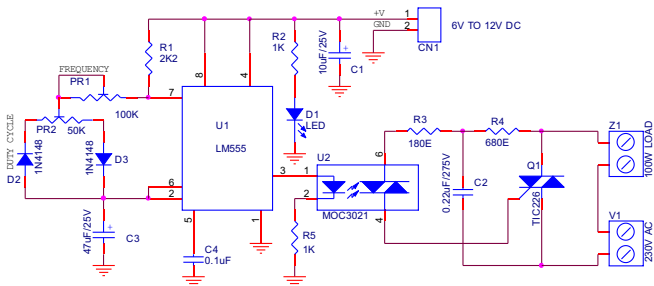
DC SUPPLY : 6V TO 12DC @ 40 mA.

AC SUPPLY : 230V AC

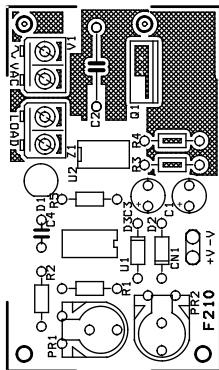
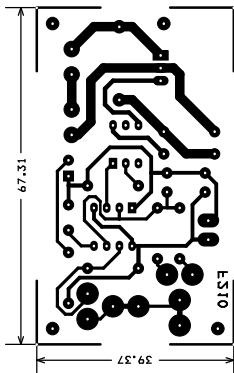
AC LOAD : 100W MAX.

PR 1 Flasher Frequency Adjust

PR 2 Duty Cycle Adjust



## PCB LAYOUT



## BILL OF MATERIAL

SR.	QNTY	NO	DISC.
1	1	CN1	6V TO 12V DC
2	1	C1	10uF/25V
3	1	C2	0.22uF/275V
4	1	C3	47uF/25V
5	1	C4	0.1uF
6	1	D1	RED LED
7	2	D2,D3	1N4148
8	1	PR1	100K
9	1	PR2	50K
10	1	Q1	TIC226
11	1	R1	2K2
12	2	R2,R5	1K
13	1	R3	180E
14	1	R4	680E
15	1	U1	LM555
16	1	U2	MOC3021
17	1	V1	230V AC
18	1	Z1	100W LOAD