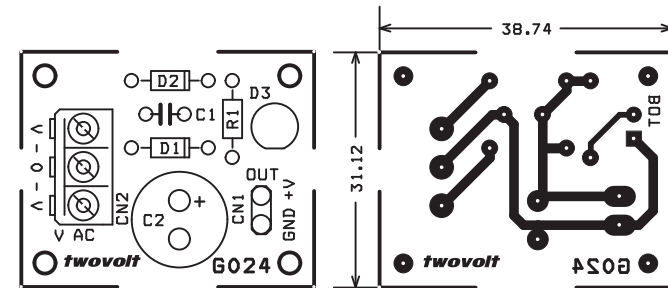
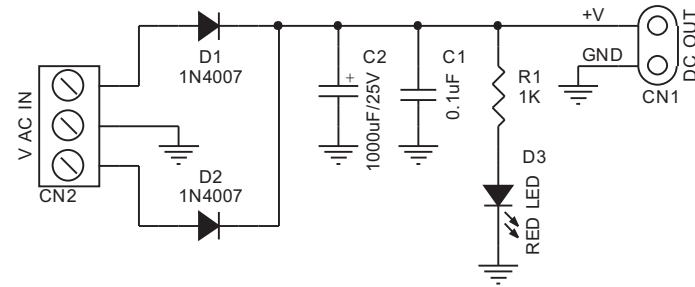
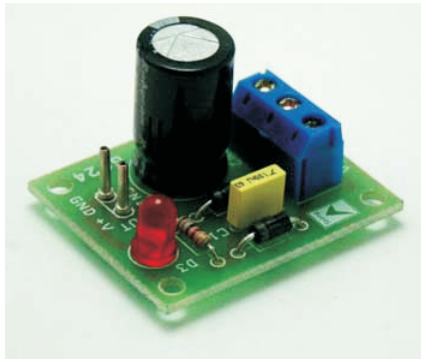


FULLWAVE CENTER-TAP RECTIFIER

Small Full Wave Rectifier project, for power supply experiments

- Input - 18 VAC center-tap, 1Amp
- Output - depends on transformer voltage which should not be more than 18 VAC
- Power Battery Terminal (PBT) for easy input connection
- LED indication for output
- Four mounting holes of 3.2 mm each
- PCB dimensions 32 mm x 39 mm



SR.	QTY.	REF.	DESCRIPTION
1	1	CN1	2 PCB PINS
2	1	CN2	3 PIN PBT
3	1	C1	0.1uF
4	1	C2	1000uF / 25V
5	2	D1,D2	1N4007
6	1	D3	RED LED
7	1	R1	1K